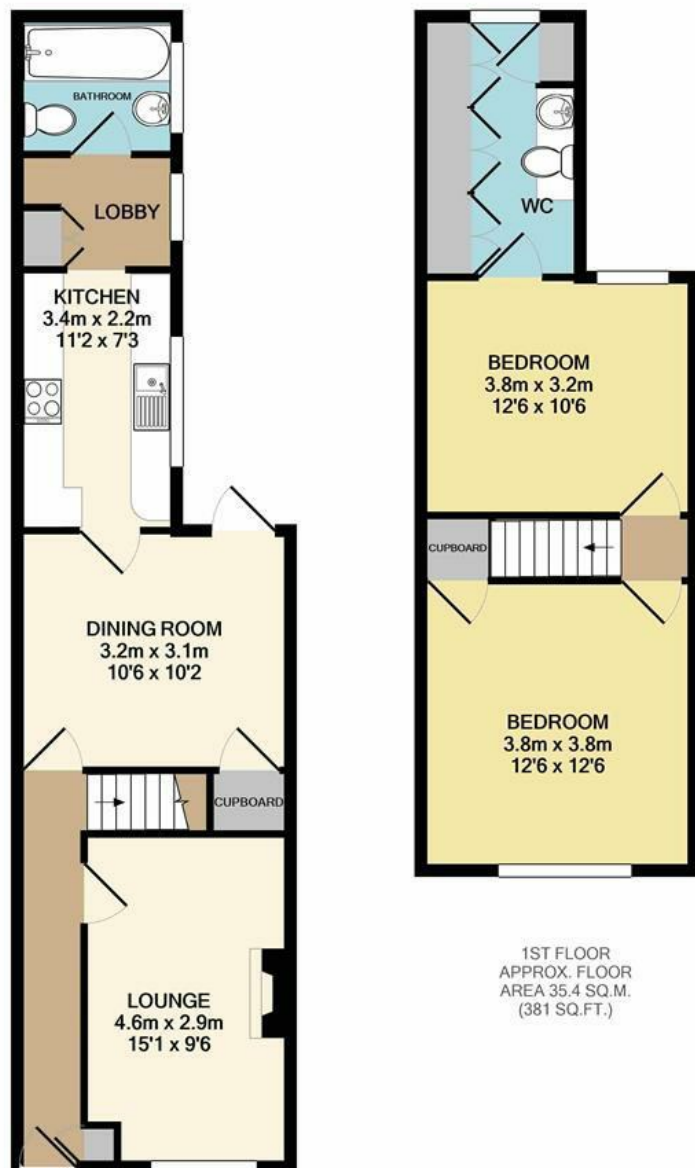




Hughenden Road | Norwich | NR1  
 Guide Price £250,000

abbotFox



GROUND FLOOR  
 APPROX. FLOOR  
 AREA 44.4 SQ.M.  
 (478 SQ.FT.)

1ST FLOOR  
 APPROX. FLOOR  
 AREA 35.4 SQ.M.  
 (381 SQ.FT.)

TOTAL APPROX. FLOOR AREA 79.8 SQ.M. (859 SQ.FT.)

Whilst every attempt has been made to ensure the accuracy of the floor plan contained here, measurements of doors, windows, rooms and any other items are approximate and no responsibility is taken for any error, omission, or mis-statement. This plan is for illustrative purposes only and should be used as such by any prospective purchaser. The services, systems and appliances shown have not been tested and no guarantee as to their operability or efficiency can be given  
 Made with Metropix ©2021

Energy Efficiency Rating		Current	Potential
Very energy efficient - lower running costs			
(92 plus) A			86
(81-91) B			
(69-80) C			
(55-68) D		61	
(39-54) E			
(21-38) F			
(1-20) G			
Not energy efficient - higher running costs			
England & Wales		EU Directive 2002/91/EC	

Disclaimer – In accordance with the Property Misdescriptions Act, the company gives notice that all descriptions, references to condition, necessary permissions for use and other details are given in good faith and believed to be correct, but any intending lessees do not rely on them as statements of fact, but must satisfy themselves by inspection or other means, as to their accuracy.



abbotFox presents this stylish, hall entranced terraced home. Occupying a peaceful position with easy reach of Norwich City Centre and a variety of local amenities, this home has been finished to an exceptional standard by the current owners. With the property offering two generous double bedrooms, and a stylish en-suite bathroom to the first floor, the ground floor offers an inviting entrance hall, sitting room, separate dining room, re-fitted kitchen and downstairs shower room. With the non-bisected rear garden affording an unexpected degree of privacy, this is the ideal opportunity for any buyer looking for a ready-made home. An internal viewing is essential to appreciate the quality this home offers.

Guide Price £250,000-£260,000

